
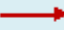






Lecture 3

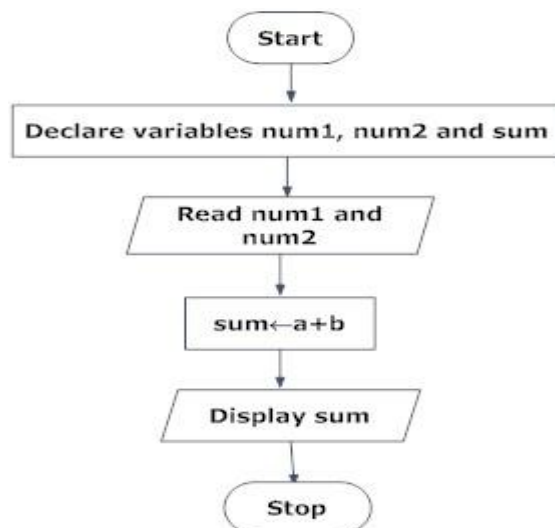
Flowchart:

A flowchart is a type of [diagram](#) that represents an [algorithm](#), [workflow](#) or process, showing the steps as boxes of various kinds, and their order by connecting them with arrows. This diagrammatic representation illustrates a solution model to a given [problem](#). Flowcharts are used in analyzing, designing, documenting or managing a process or program in various fields. The main symbols used to draw a flowchart are shown in following figure.

Symbol	Shape	Terminology	Purpose of the Symbol
	Oval	Terminator	To begin/end (start and stop)
	Arrow	Connector line	To connect any two symbols
	Rectangle	Process	Initialization and Computation
	Parallelogram	Data	Read and Print Data
	Rhombus	Decision	Conditionals – branching
	Circle	On page connector	To have a flowchart connectivity on the same page

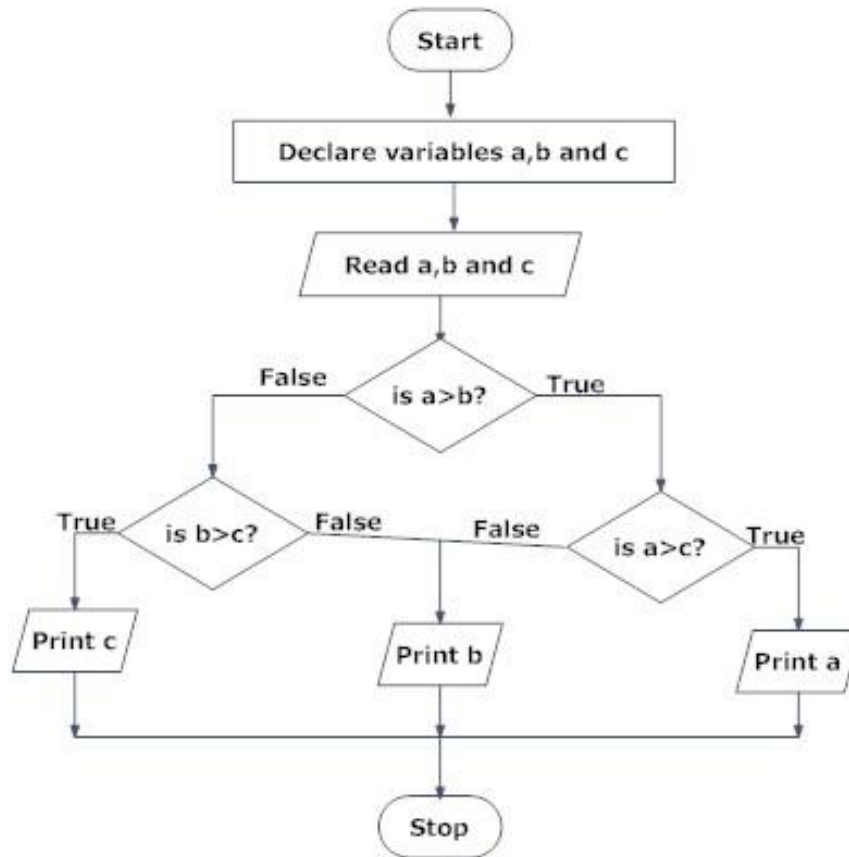
Example 1:

Draw a flowchart to add two numbers entered by user.



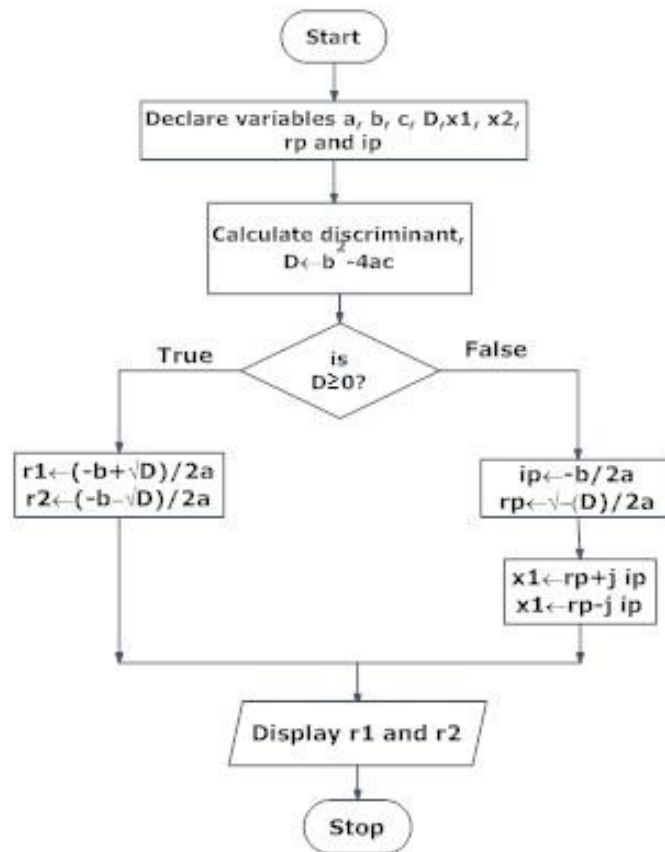
Example 2:

Draw a flowchart to find the largest among three different numbers entered by user.



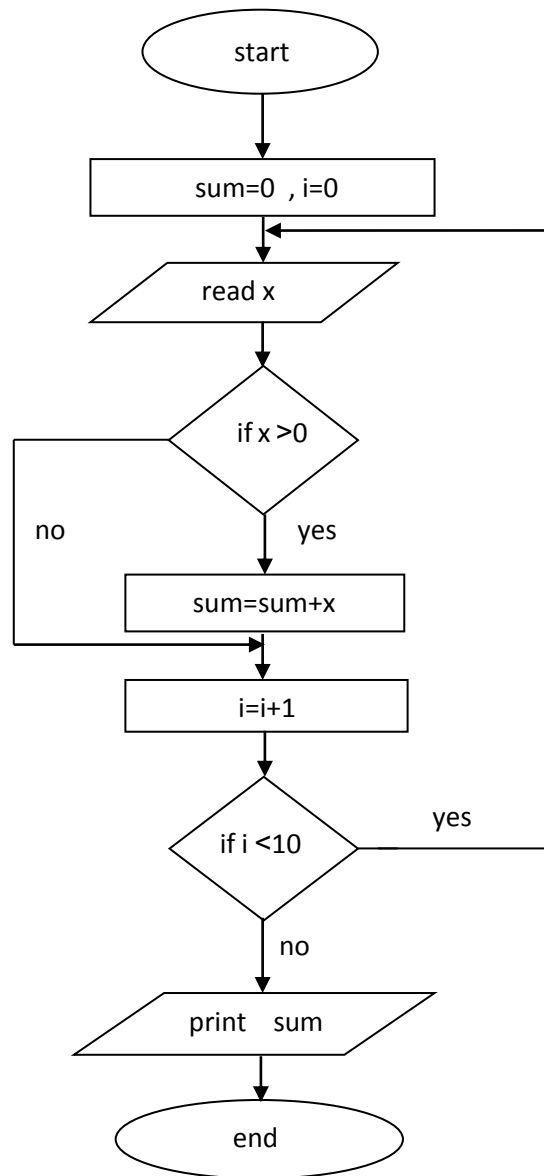
Example 3:

Draw a flowchart to find all the roots of a quadratic equation
 $ax^2+bx+c=0$



Example 4:

Draw a flowchart to find the summation of positive numbers between ten numbers



Example 5:

Draw a flowchart to find the Fibonacci series till $\text{term} \leq 1000$.

